

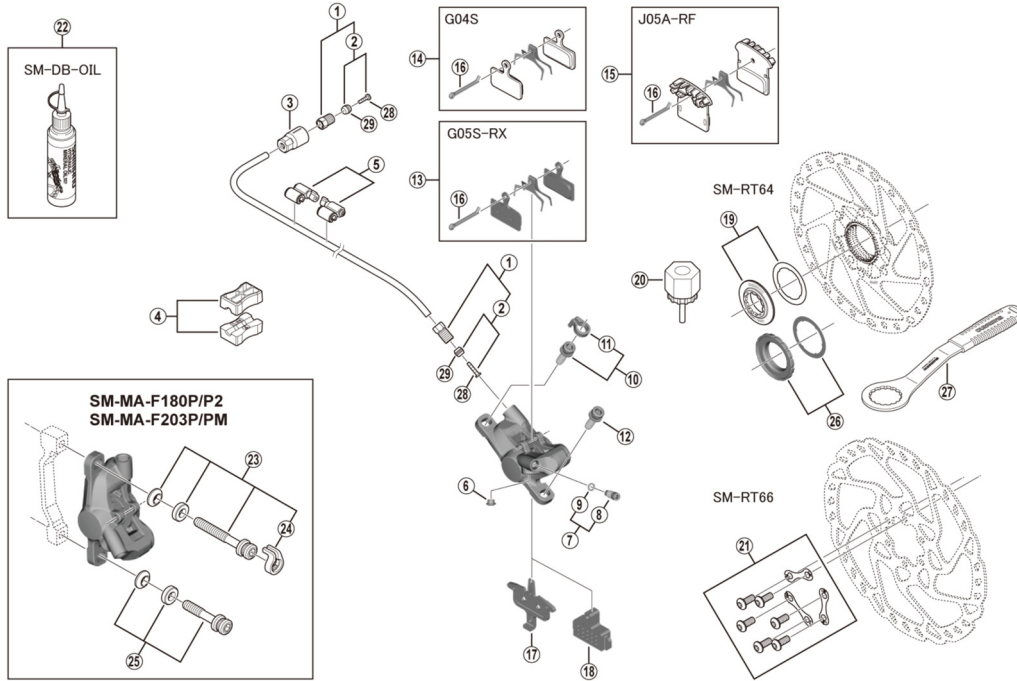
DEORE Disc Brake

BR-M6000 Brake Caliper

SM-RT64 Disc Rotor/Center Lock

SM-BH90-SS / SM-BH59-SS Brake Hose

SM-RT66 Disc Rotor/6-Bolt



ITEM NO.	SHIMANO CODE NO.	DESCRIPTION
1	Y8KH98010	Flare nut unit for SM-BH90-SS
	Y8H298030	Flare nut unit for SM-BH59-SS
2	Y8JA98020	Olive and connector insert for SM-BH90-SS
	Y8H298040	Olive and connector insert for SM-BH59-SS
3	Y8JA07010	Cover
4	Y8H198030	TL-BH61 Shimano original tool (2 pcs.)
5	Y83098040	SM-HANG Hose supporter A and B
6	Y88F06000	Bleed boss cap
7	Y8LS98030	Bleed screw and O-ring
8	Y8VZ07000	Bleed screw
9	Y8B511001	O-ring
10	Y2F398020	Caliper fixing screw (M6 x 18.7) and snap ring
11	Y2RT06000	Snap ring
12	Y8C509020	Caliper fixing screw (M6 x 18.7)
*	EBPG05SRXA	G05S-RX Resin pad and spring with split pin (pair)
	Y2S398010	
*	EBPG05SRXBS	G05S-RX Resin pad and spring with split pin (25 pairs)
	Y2S398011	
*	IBPG04SMXA	G04S Metal pad and spring with split pin (pair)
	Y8MY98010	
*	EBPJ05ARFA	J05A-RF Resin pad with fin and spring with split pin (pair)
	Y2R298020	
*	EBPJ05ARFBS	J05A-RF Resin pad with fin and spring with split pin (25 pairs)
	Y2R298021	
16	Y8DB06100	Split pin
17	Y84E03000	Pad spacer
18	Y8J712100	Bleeding spacer
19	Y8KU98010	Lock ring (black) and washer
20	Y12009230	TL-LR15 Lock ring removal tool
21	Y8KT98010	Rotor fixing screw and lock washer
22	Y83998020	Mineral oil (100 ml)
	Y83998030	Mineral oil (500 ml)
23	Y2RT98020	Caliper fixing screw unit (M6 x 37.9) for SM-MA-F180P/P2
	Y2RT98030	Caliper fixing screw unit (M6 x 40.2) for SM-MA-F203P/PM
24	Y2RT07000	Snap ring
25	Y8G498030	Caliper fixing screw unit (M6 x 32.1) for SM-MA-F180P/P2
	Y8J498020	Caliper fixing screw unit (M6 x 34.4) for SM-MA-F203P/PM
26	Y24698030	Lock ring and washer (external spline type)
27	Y13098000	TL-FC36 Lock ring removal tool
28	Y8JA98026	Connecting insert (100 pcs.) for SM-BH90-SS
	Y8H298046	Connecting insert (100 pcs.) for SM-BH59-SS
29	Y8H298047	Olive (100 pcs.)

Jul.-2022-4192E

© Shimano Inc. I

Specifications are subject to change without notice.

SHIMANO